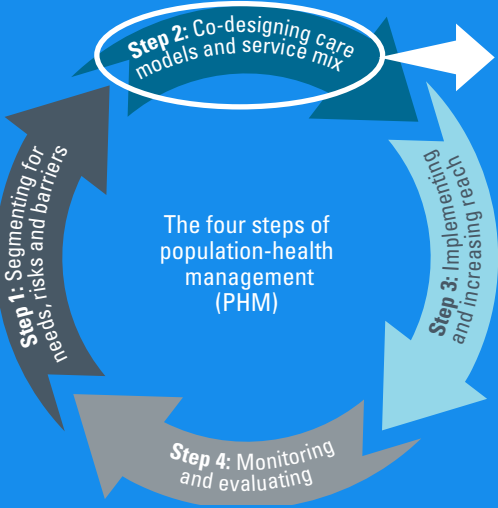


Core concept and principles



- Consider five change components when designing care models:
- Delivery system redesign
 - Clinical decision supports
 - Information technology supports
 - Self-management supports
 - Community resources



Include **ALL** care partners including patients and caregivers



ALL redesign needs to

- apply an equity lens
- account for socioeconomic factors
- engage under-represented populations

Source: adapted from Population Health Alliance, 2012

Tools for engaging patients and caregivers in co-design



Virtual World Café: using interactive breakout sessions provide an opportunity to explore key questions, identify core components of care delivery models, and identify barriers and facilitators to implementation.

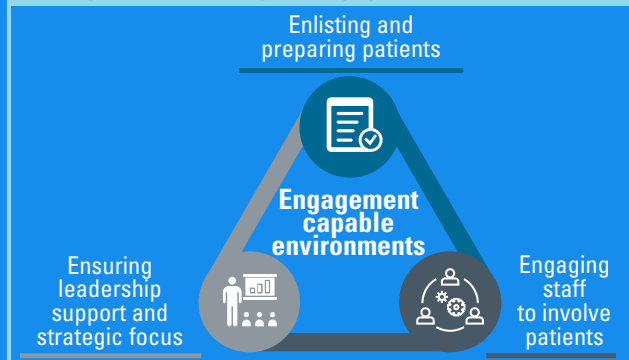
Click [here](#) for an example.



Vignettes: for each priority population, develop 2-3 “vignettes” to reflect a range of characteristics/needs; use them as a communication tool to spark conversation among your partners.

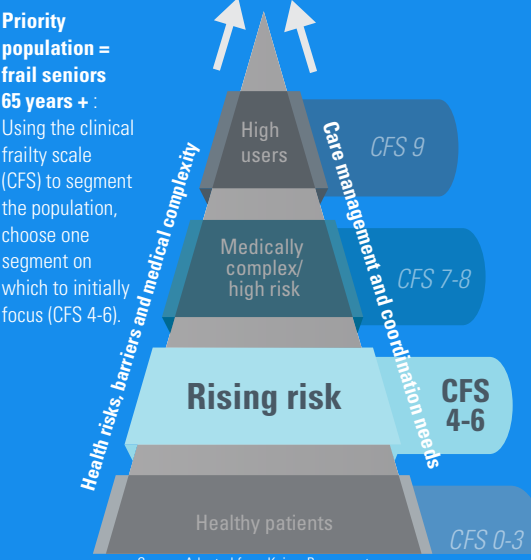
Click [here](#) for example one. Click [here](#) for example two.

This framework can be used as a checklist while you think about your engagement activities



Hyperlinked source: Engagement Capable Environments Framework, Baker & Denis (2006)

An example of connecting the dots between segmentation and co-designing care models



- If data are unavailable, co-design a case-finding process (i.e., identify and document all older adults CFS 4-6)
- Test and iterate a new process on a small scale (e.g., select providers with patient and caregiver input)

- In a sub-set of the segment, create a registry of patients and engage with them to understand needs (e.g., complete geriatric assessment)
- Use quality tools to understand care gaps (e.g., fishbone diagram) and prioritize solutions (e.g., Pareto analysis)

- Co-design care models with partners (including patients) to meet needs
- Test and iterate new models and pathways

- Link/share population health data (primary-hospital-home community) to monitor care quality and population health outcomes
- Monitor quadruple-aim metrics

Source: Adapted from Kaiser Permanente