

COVID-END's 7 principles

1. Supporting (not competing with or replacing) well-positioned regional, national and sub-national organizations that are working in close partnership with key target audiences and already responding to their evidence needs
2. Supporting – with a common brand/identity, small agile secretariat, and simple working group structure – a distributed network of organizations and individuals to play to their comparative advantages and leverage one another's work
3. Seeking out quick wins for those supporting decision-makers and among those involved in preparing evidence syntheses, technology assessments and guidelines, and taking measured steps to longer-term solutions that can better support decision-makers
4. Strengthening existing institutions (e.g., Campbell and Cochrane) and processes (e.g., protocol registration in PROSPERO) and contributing to their long-term sustainability
5. Addressing a diversity of regional and linguistic needs among decision-makers and those who support them
6. Ensuring diversity, equity and inclusion in the leadership of the initiative and its working groups (e.g., achieving a balance of co-chairs by gender and from high-income countries and from low- and middle-income countries)
7. Committing to related principles articulated by others
 - Principles of high quality evidence synthesis as articulated by Evidence Synthesis International
 - Principles of open access to of all data, methods, processes, code, software, publications, education and peer review produced through the initiative (in keeping with 'open synthesis' principles)

Together we can make a big difference in minimizing the human suffering being caused by COVID-19. We can also position ourselves optimally for addressing the more everyday challenges that we will return to when the worst of COVID-19 is behind us.

COVID-19 Evidence Demand Context

Unprecedented but uneven demand for evidence (incl. syntheses, guidance & HTAs) across sectors

Quality and currency of evidence & evidence products difficult to discern

COVID-19 Evidence Supply Challenges

Rapid upsurge in variable quality primary COVID-specific research, leading to rapidly evolving evidence base

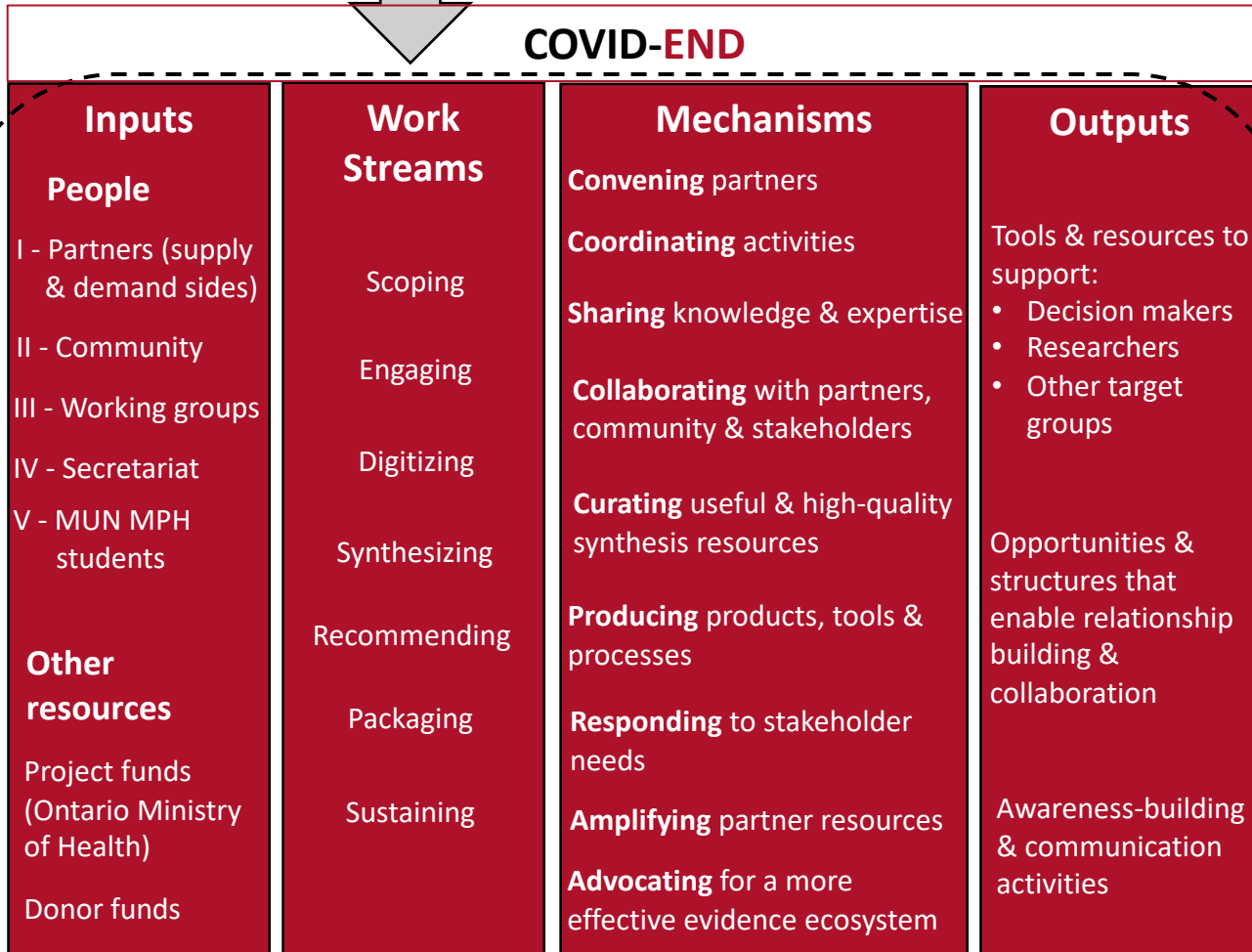
Evidence ecosystem less coordinated than optimal

More duplication of synthesis activities than is constructive

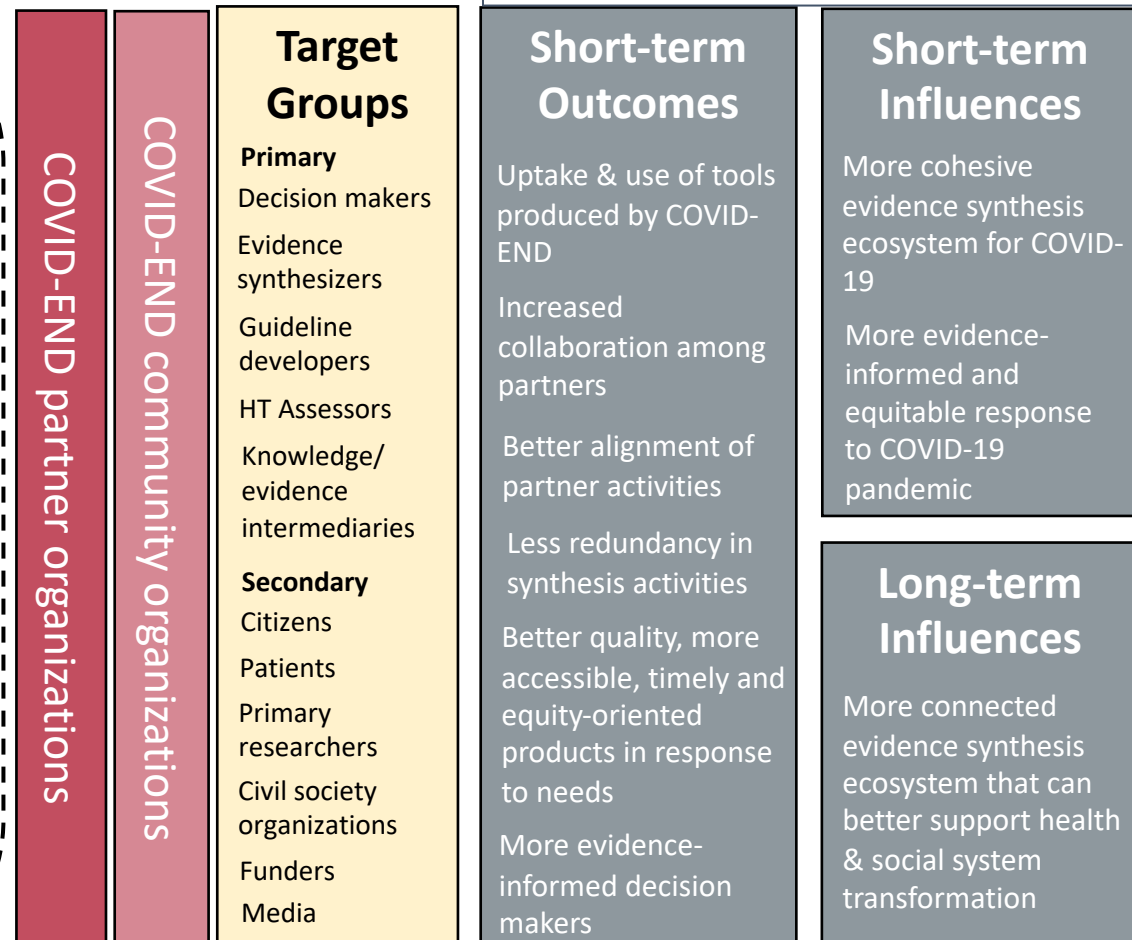
New entrants not always aware of best approaches and tools

Evidence synthesis activities are of variable quality

COVID-END



Impacts

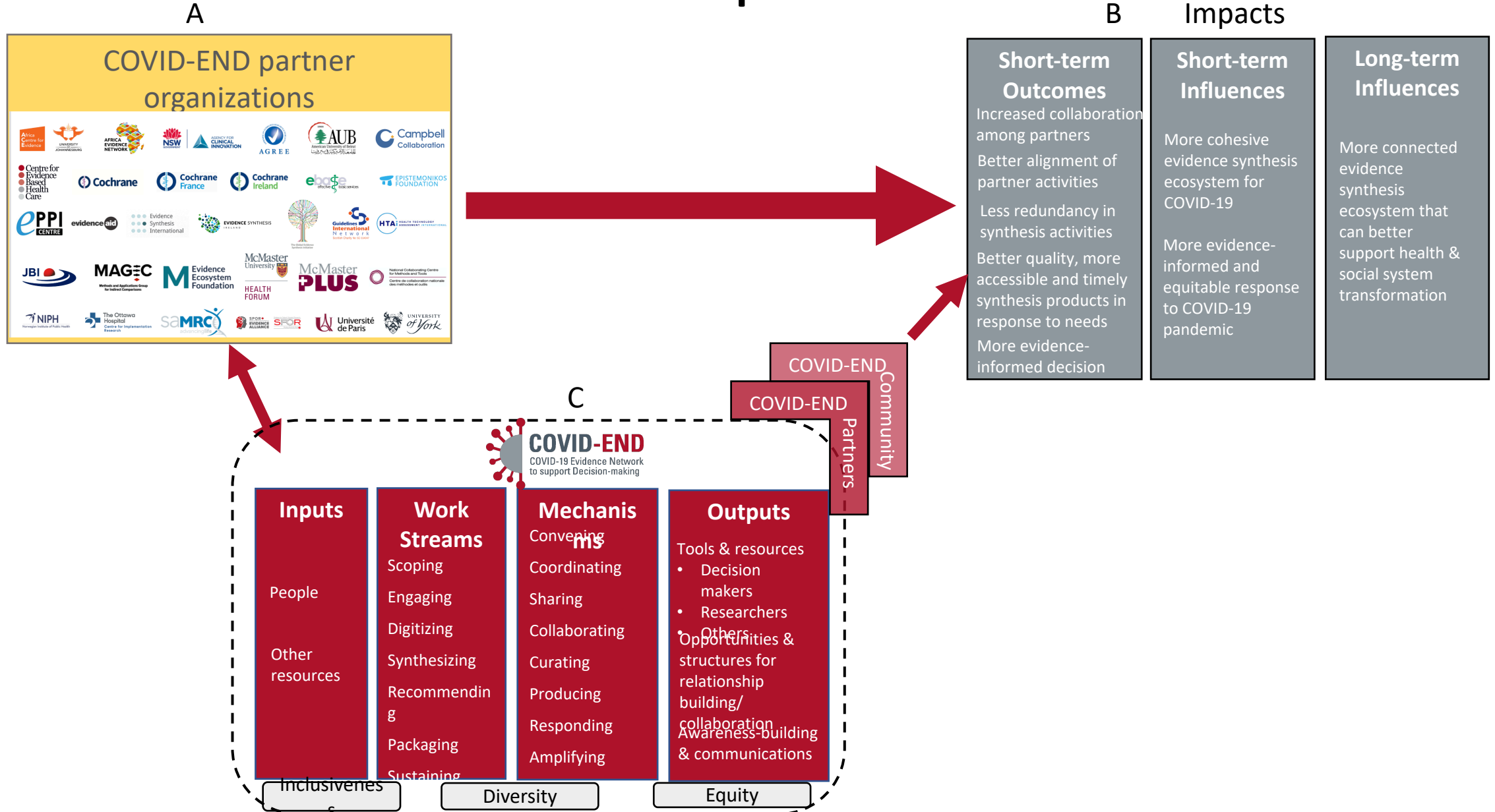


Inclusiveness

Diversity

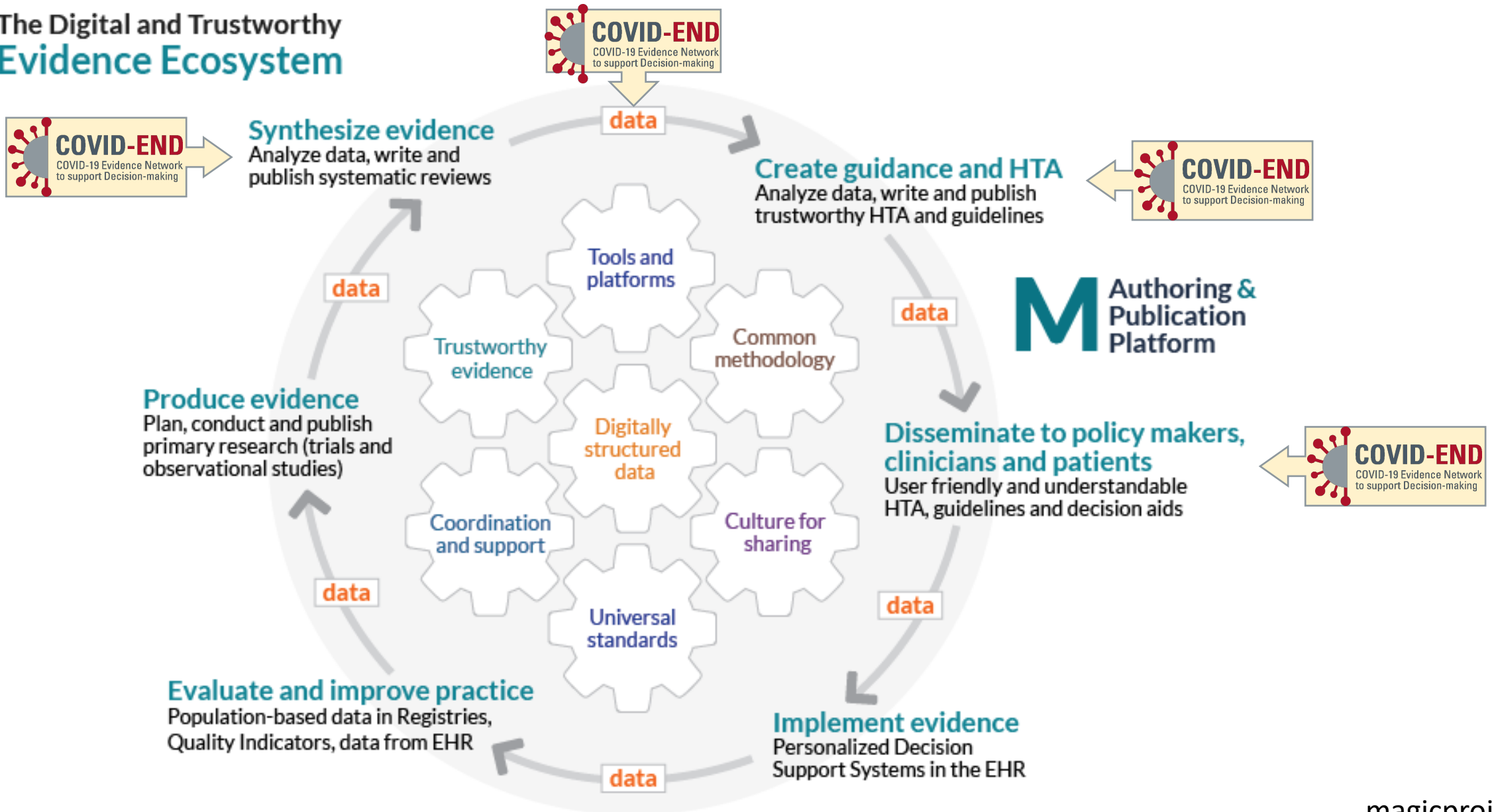
Equity

Impacts Diagram - Relative Contributions of COVID-END and its Partners on Impacts

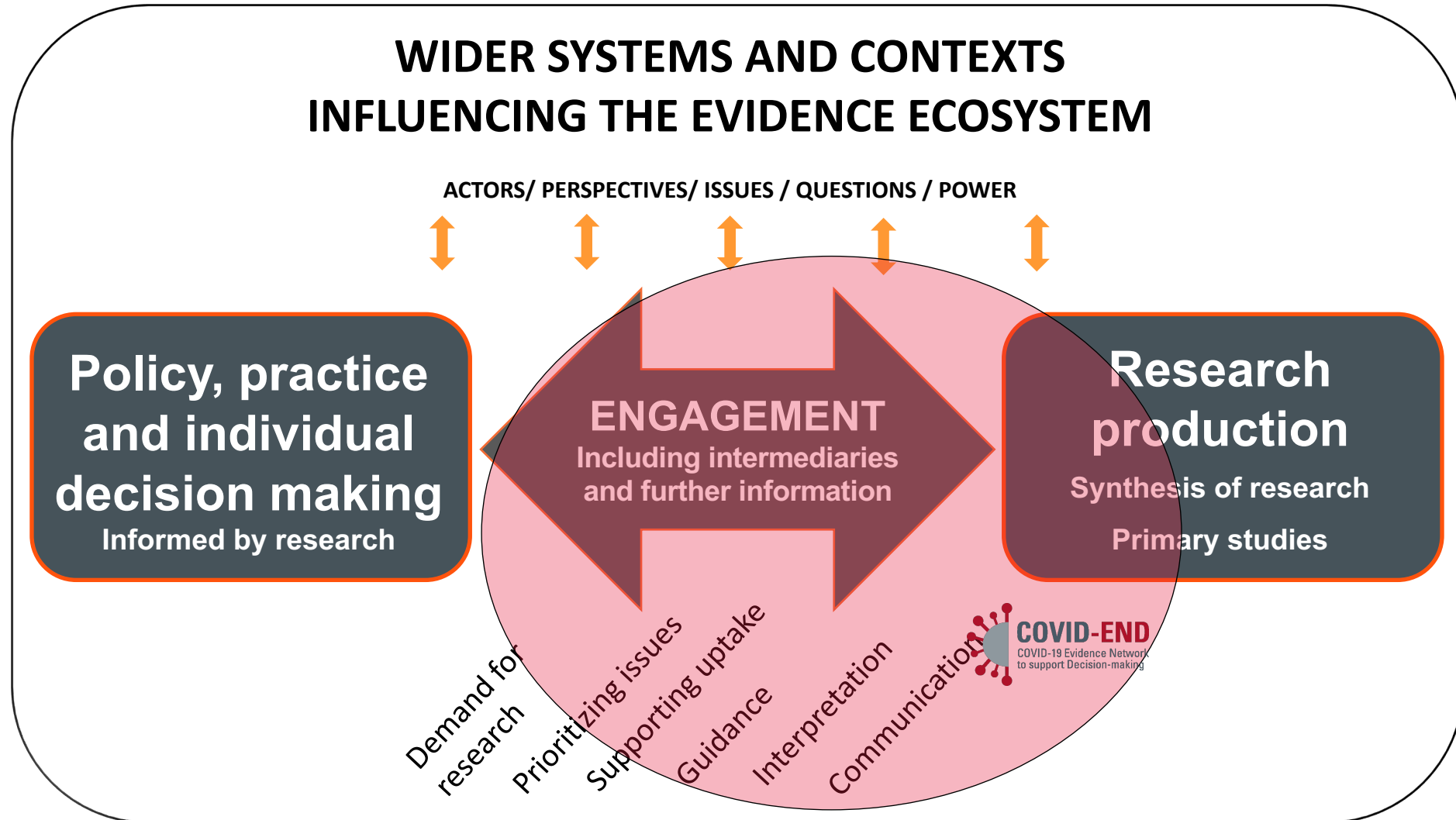


COVID-END Expected Areas of Influence in Context of the Broader Evidence Ecosystem

The Digital and Trustworthy Evidence Ecosystem



EVIDENCE ECOSYSTEMS



COVID-END Expected Areas of Influence in Context of the Broader Evidence Ecosystem

WIDER SYSTEMS AND CONTEXTS INFLUENCING THE EVIDENCE ECOSYSTEM

ACTORS/ PERSPECTIVES/ ISSUES / QUESTIONS / POWER

